

LONGITUDINAL TRAVERSE UNIT LV 400

The longitudinal traverse unit **LV 400** allows an exact positioning of telescopic loaders over the various hatches of silo vehicles and silo wagons.

Areas of Application

.

- Frame made of steel profiles
- Funnel made of steel or in various stainless steel qualities.
- Installation of loader filter possible.
- Avoids damages on the loader and the vehicles.
- Compact size allows installation in existing systems.
- Smooth loading from the control room.

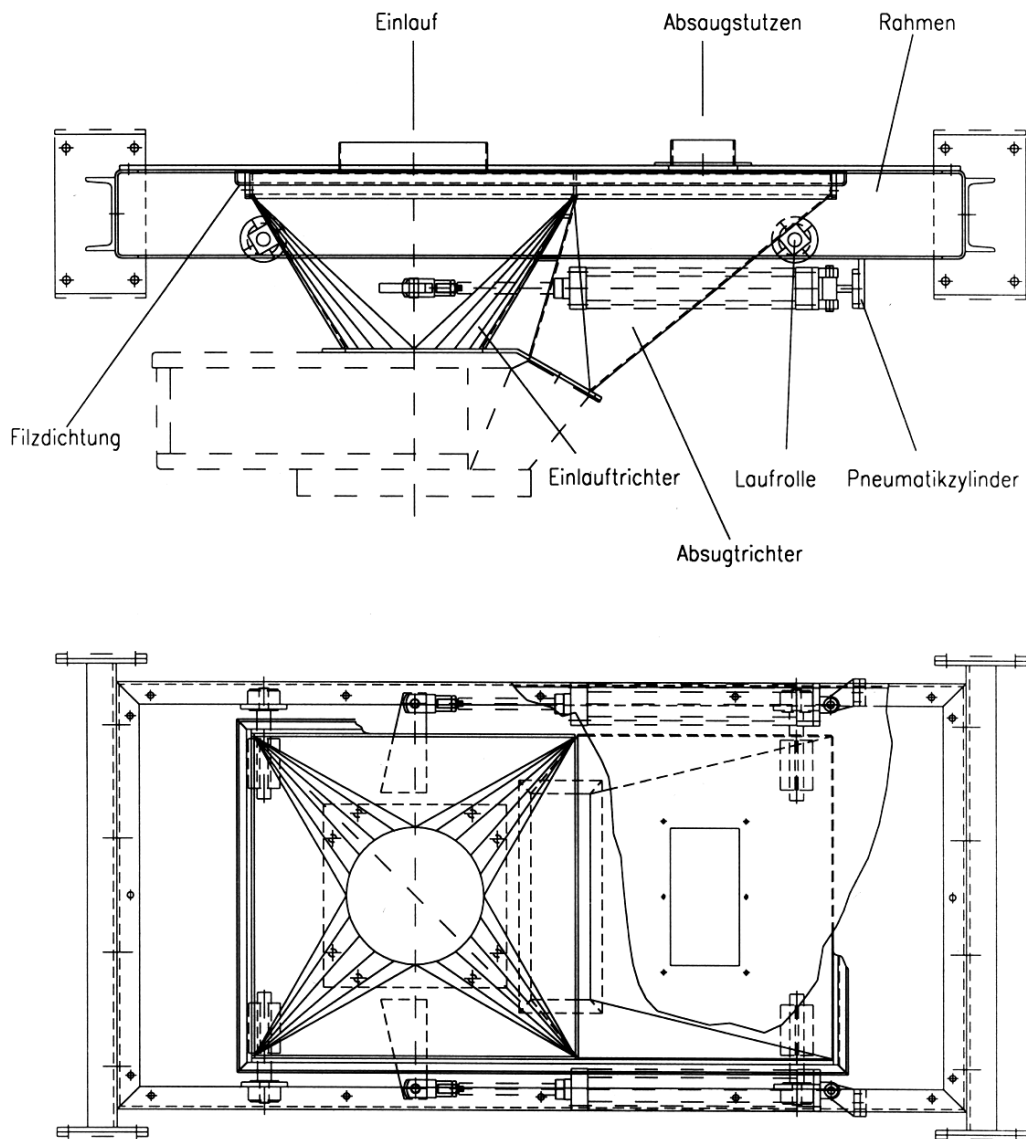
Details / Explanation

Material: Steel or stainless steel. Design St 37, Zinc-phosphate-grounding, approx. 40 µm, top coat with hammer tone silver gray, approx. 40 µm.

Finish

Dimensions / Technical Data

Inlet	ø 300 mm alternatively \square 300 mm
Outlet	ø 300 mm
Construction height	approx. 460 mm
Length	approx. 2100 mm
Width	approx. 1530 mm
Weight	approx. 380 kg
Moving range	2 x 200 mm



Article Number

Type LV 400	Article number
Longitudinal traverse unit LV 400 for fine positioning of the TELE-RONDO	755 10 003